

STEP BY STEP

GRIFFIN MAKE

MATERIALS

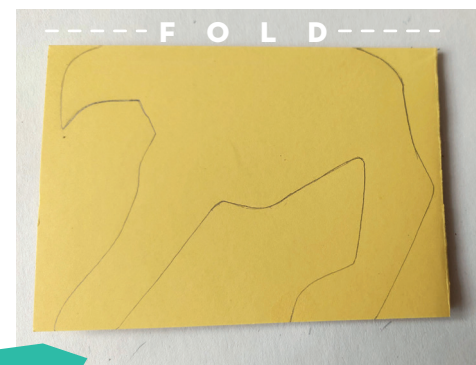
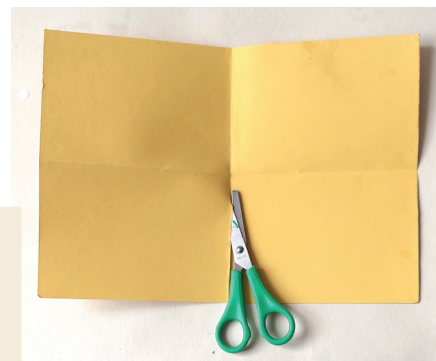
- 1x A4 card
- glue stick
- scissors
- hole punch
- pencil
- colourful scrap paper, pens & stickers etc. for decorating



THESE MATERIALS
MAKE 2 GRIFFINS

1

Neatly fold card in half and half again. Unfold and cut in two along the shorter fold. Next, refold the paper and draw around the template.



2

Cut around the template so that you have -

- Griffin body with fold along back
- 2x wings
- 1x long piece for making the tail
- extra pieces to cut up for decoration

Trim the paper to create tail shape, fold and glue sides together.

3



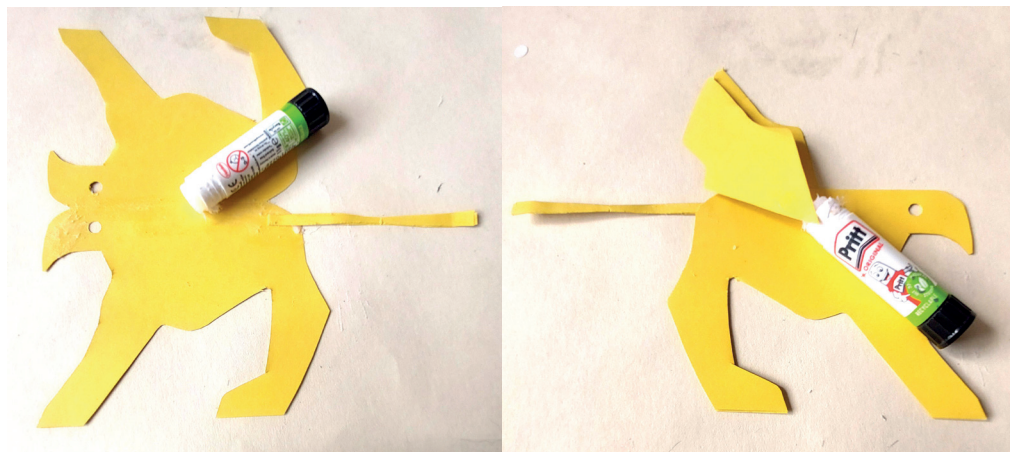
4

Use the hole punch to make an eye near the beak.



5

Open out the griffin body and glue along beak and fold *only*. Add the tail before folding the griffin closed.



Stand your griffin up. It should look like this now.

7



6

Glue the wings onto either side of the griffin's body in the centre of the back.

Use the extra card to make shapes around the head and tail. Then get creative, decorating your griffin to make it unique and colourful!

YOUR GRIFFIN'S STORY

What's your Griffin's name?

Are they friendly or fierce?

Funny or grumpy?

What treasure are they protecting for you?

TIP - Glue decorative paper straight onto the griffin and turn over to trim excess off.

8



THE WALTHAMSTOW

GRIFFIN

STEP BY STEP

GRIFFIN MAKE

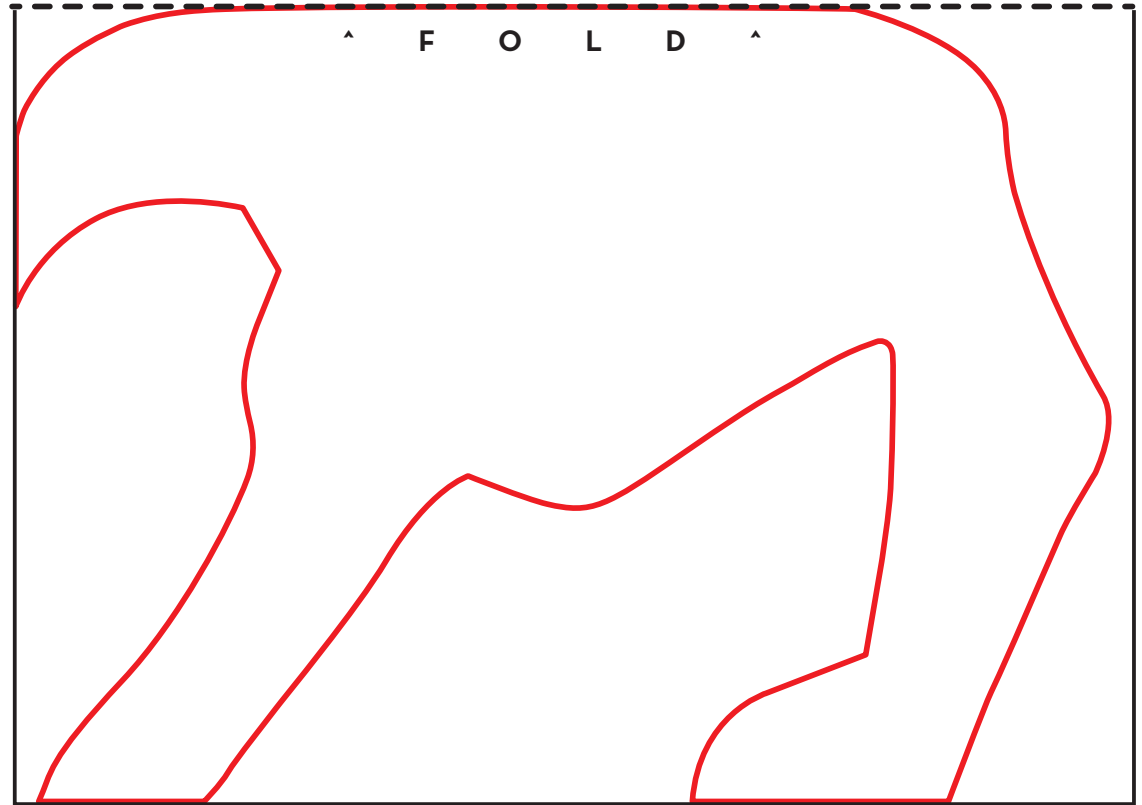
Print and cut out this template, making sure to print to 100% scale so that the rectangle fits one quarter of an A4.

(this would be equal to an A6)

Cut around the red outline of the griffin body.

You can use this template for multiple griffin makes!

TEMPLATE



THE WALTHAMSTOW

GRIFFIN

Have you found
The Walthamstow Griffin
sculpture by Sandie M Sutton
on Walthamstow High Street?

Thank you to sculptor Sandie M Sutton and designer Hattie Scott for creating this worksheet.

For more about The Walthamstow Griffin see www.artillery.org.uk